

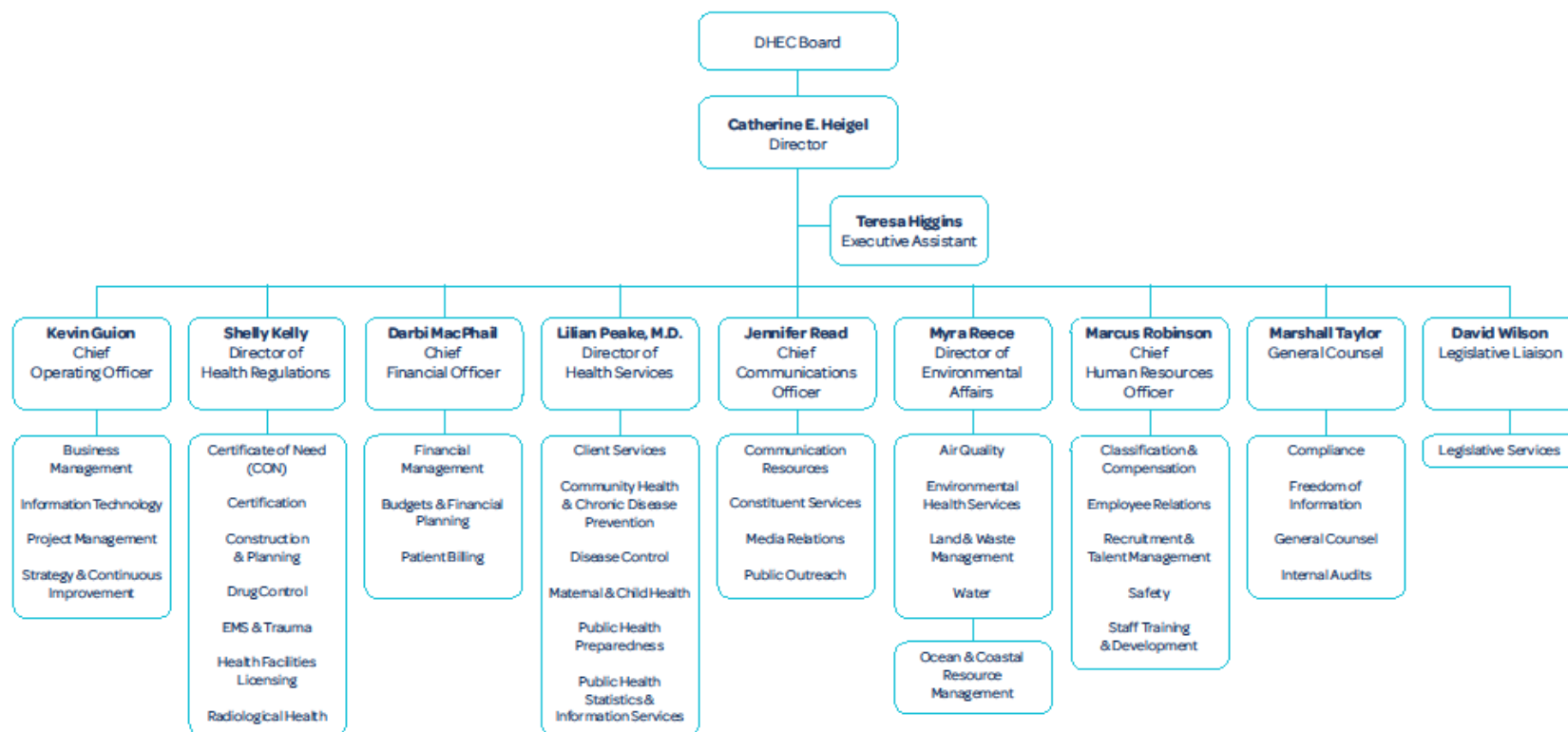


FY 2017-18 Budget Presentation House Ways and Means

Healthcare Subcommittee
Jan. 25, 2017

Presented by
Catherine Heigel, Director







Agency Information:

DHEC by the Numbers

- With locations in all **46 counties** across the state, the DHEC team is currently **over 3,300 employees strong**. As of Oct. 22, this includes:
 - 2,975 full-time employees (FTE's)
 - 116 temporary grant employees
 - 2 time limited employees
 - 227 hourly employees

Initiatives and Management Plans

- **24 initiatives** have been developed supported by approximately **85 management plans**. Examples include:
 - Developing an e-Permitting, licensing, and inspection portal
 - Establishing a project management office
- The executive team has selected **30 top priority projects** from those plans.

Legal Responsibilities

- DHEC legal responsibilities currently touch on **more than 360** State and Federal statutes and regulations, and state provisos.



Accountability Highlights:

DHEC's Day-to-Day Operation

DHEC performs countless important functions impacting nearly every citizen of our state. Snapshot of what "business as usual" looks like for DHEC:

Health Services

- In the last year (Aug 2015 – Aug 2016), we had **777,781 clinical client encounters** at our health departments for WIC, preventive health, immunization services, and others
- In 2015, our staff investigated a total of **363 acute disease outbreaks**.
- During this same time period, our staff received **55,254 reports of acute diseases** (laboratory, morbidity reports).
- We also followed up on and **conducted contact investigations with 593 patients** that were reported to have tuberculosis infection or disease.
- Through our follow-ups and contact investigations with these individual cases, our team **identified 1,256 potential contacts**.



Accountability Highlights:

DHEC's Day-to-Day Operation (continued)

Environmental Affairs

- As of December 2015, DHEC's Environmental Affairs had **over 30,000 active permits**, including but not limited to asbestos projects, private wells, septic tanks, industrial stormwater general permits, infectious waste generators, mines and more.
- In 2015, Environmental Affairs conducted **over 90,000 inspections**, covering programs as diverse as recreational waters and underground storage tanks to air quality.
- Also during this time, our Bureau of Environmental Health Services **responded to and investigated 46,188 complaints**, ranging from rabies exposures to open burning to emergency response spills.



Accountability Highlights:

DHEC's Day-to-Day Operation (continued)

Health Regulations

During 2015, our Health Regulation team conducted over **8,020 Health Regulation inspections**, including facility, construction, registrants of controlled substances, EMS agencies, ambulances and X-Ray machines. This includes:

- 3,737 total facility inspections (including fire and life safety)
- 398 construction inspections
- 1,703 total inspections of registrant and controlled substances
- 127 EMS agency inspections
- 537 ambulance inspections
- 1,394 X-Ray machine inspections
- 132 facility inspections for radioactive materials



Accountability Highlights:

Event Response

October 2015 Flooding

- Collectively, DHEC staff expended more than **55,000 work hours** on flood response and recovery. The agency was able to mobilize, quickly identify problems and develop solutions, while continuing to provide the day-to-day services citizens require.

Hepatitis A Outbreak in Food Handlers

- In September 2015, DHEC was notified by a hospital lab of positive test results for Hepatitis A in employees of two Upstate restaurants. The outbreak was successfully managed and no patron of the restaurants has developed Hepatitis A.
- DHEC administered **4,975** Hepatitis A vaccinations.
- Response included **277 DHEC staff** from across the state.

Tuberculosis (TB) in South Carolina

- Last year, DHEC responded to **37 TB outbreaks** in various settings, including a child care facility, a high school, multiple churches, dialysis centers, a nursing home and many other businesses.
- Through DHEC's investigations, **600 individuals were identified, assessed and tested.**

Accountability Highlights:

Event Response (continued)

Wildfires

- DHEC has been a leading source of information concerning wildfire smoke safety all across the state, by providing interviews and dependable forecasting. Additionally, we have provided material assistance to first responders and emergency management at the Pinnacle Mountain fire.
- The Upstate Public Health Preparedness mobile communications trailer was on scene at the Table Rock Wesleyan Camp command post in Pickens starting on November 13, 2016.
- DHEC Health Services medical staff increased public awareness regarding health hazards associated with smoke in affected areas.
- DHEC Bureau of Air Quality staff provided daily air quality forecasts.
- DHEC had 374,466 views on its website.

Hurricane Matthew Response

Hurricane Matthew (as of 10/25/2016)

- DHEC and the U.S. Army Corps of Engineers **assessed** the condition of **469 dams** in areas of the state impacted by the storm.
 - **25 dams** were found to have **breached** (20 regulated and 5 un-regulated)
 - **21 Emergency Orders** were issued to owners of regulated dams requiring that they lower water levels and engage a licensed professional engineer to perform a detailed inspection of the dam.
 - **115 Directive Letters** were issued to owners of regulated dams requiring that they engage a licensed professional engineer to assess the dam to identify any necessary repairs and/or maintenance.
- **27 Boil Water Advisories** were issued for storm-related issues.
- **9 Special Medical Needs Shelters** were opened for a total of **130 Shelterees**.
- **114 inpatient health care facilities**, including 4 hospitals, **evacuated** from the medical evacuation zones. Over **1700 patients were transported**. 13 hospitals located in the medical evacuation zones sheltered in place.



South Carolina Department of Health and Environmental Control

Healthy People. Healthy Communities.

Prioritized Summary of FY 2017-2018 Budget Request

	Form B "Recurring"	Form C "Non-Recurring"
<u>State/Federal Regulatory Requirements:</u>		
Salary (Increments) Required	\$2,079,184	
Fringe Benefits (Increments) Required	\$551,828	
Electronic Health Records	\$3,800,000	
 <u>Mission Critical / High Risk to State:</u>		
Dam Safety Program		\$4,893,750
Data Center Migration	\$3,200,000	
Public Health Nursing Salary	\$1,901,513	
 <u>Foundational / High Priority:</u>		
EA Lab Quality Assurance	\$166,505	\$29,069
EA Lab Equipment	\$60,000	\$142,092
Stroke System of Care	\$253,306	\$7,308
Removal of Non-Compliant UST		\$291,000
Unregulated Petroleum Releases	\$250,000	
Lead Screening & Follow Up	\$511,234	\$51,200
Cancer Screening		
Best Chance Network (Breast & Cervical Cancer Screening)	\$1,000,000	
USC Colon Cancer Prevention Network	\$1,000,000	
Hemophilia	\$1,800,000	
 Sub Totals Recurring & One-Time Budget Requests	 <u>\$16,573,570</u>	 <u>\$5,414,419</u>
 Total Budget Request	 \$21,987,989	



PROVISO REQUEST

34.17 DHEC Nursing Home Medicaid Bed Day Permit (AMEND)

DHEC recommends changing the wording to authorize transfer of Medicaid patients days to the receiving facility in the event of a resident transfer from one nursing home to another nursing home without restriction. Under the current wording of the proviso, absent a violation of state or federal law or Medicaid circumstances, a patient could not transfer to a nursing home that does not have available Medicaid beds. As currently written, this proviso restricts the ability of patients to choose care.

34.18 DHEC Mineral Sets (DELETE)

The agency has not sold any mineral sets (\$3/ea.) in several years and only a few vials of material remain. The agency recommends that the account be closed, the proviso deleted, and remaining funds transferred to the General Fund.



PROVISO REQUEST

34.42 DHEC Obesity (DELETE)

Partners are already working together as a part of Scaledown initiative and this proviso does not include all of the agencies and organizations involved. Partners are working together in a very committed, voluntary capacity, and have been doing so for three years. Additionally, the proviso addresses two unfunded mandates of the Student Health and Fitness Act of 2005 (59-10-50 and 59-10-320).

34.43 DHEC Residential Treatment Facilities (PRTFs) Swing Beds (DELETE)

There are potential conflicts with federal CMS rules and regulations and this proviso. Pursuant to federal regulations, swing beds are certified units in hospitals and critical access hospitals that are located in rural areas as designated by the Census Bureau. In addition, the hospital must be licensed for fewer than 100 beds. This proviso can create potential issues for both hospitals and PRTFs.



PROVISO REQUEST

Emergency Medical Services Monetary (NEW)

DHEC request a new proviso that allows the Bureau of Emergency Medical Services to retain up to **\$ 40,000** of the civil monetary penalties assessed against nonconforming providers. Additional funds should be used for inspections to enforce the provisions of regulations applicable to the bureau. These funds will be separately accounted for in the department's fiscal records.